

Glory2504

HIGH-SPEED LARGE-FORMAT SINGLE PASS
CORRUGATED DIGITAL INKJET PRINTER



Breakthrough Single Pass Technology Reshapes the Value of Corrugated Packaging

Opening the Golden Age of Efficiency, Width and Quality

Hanway drives industrial packaging production into a new era of digitalization with the revolutionary high-speed large-format Single Pass corrugated digital inkjet printer. Glory2504 is selling well in the global market with amazing productivity, large-format, printing quality and stability, the inline solution can meet the actual production needs of customers to help companies quickly expand their customer base and increase profits.



Breakthrough Large-format Applications and Productivity

- No plate-making, no min. order limitation, fast delivery, immediate desirability
- Cost saving for plate-making, labor, storage in the preceding period
- Max. productivity: 21,600 m²/hr
Max. print width: 2,160 mm

Excellent Performance of Hardware & Software

- Modular design for easy installation, adjustment and maintenance
- Advanced linear motor drive for more stable and efficient printing
- Printhead thermostatic humidity control system improves operating efficiency
- Trolley automatic anti-collision protection extends the useful life of printheads

Faster Response to Market Demands

- One-time output of orders with the same specification, seamless and continuous production of complex full-size orders
- Diverse infinite designs to meet multi-version, personalized and variable data orders
- Brand protection and anti-counterfeiting traceability, creating personalized marketing campaigns and increasing profits

Integrated & Automated & Intelligent

- End-to-end workflow solution: feeding + pre-coating + printing + drying + slotting + die-cutting
- Multi-process integration achieves more labor-saving, higher efficiency; high automation brings higher value
- Manufacturing Execution System realizes efficient production management

Die Cut

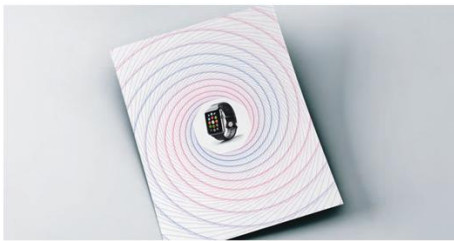


Higher Printing Quality

Multi-stage grayscale printing and compatible to offset quality



Less Ink Consumption



- Order Quantity: 1000 pieces
- Image Dimension: 2110 * 1170 mm
- Material: Brown board Ink: Pigment
- Resolution: 600 * 600 DPI

286.2ml 417.4ml 75.5ml 248.7ml

Faster Order Switching

Same Size Boards

600 - 2400 mm

Order Switch Time/Min 0 0.2 1 2



Richer Pattern Designs



Multi-color available



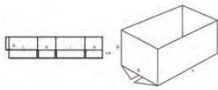
Personalized & customized designs



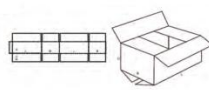
Support for fully variable data
(Color barcodes, Color QR codes, text, images, etc.)

International Box Specifications Supported by slotter Unit

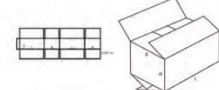
• 0200



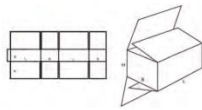
• 0201



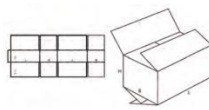
• 0202



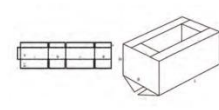
• 0203



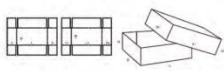
• 0205



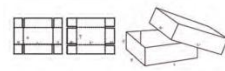
• 0209



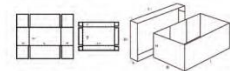
• 0300



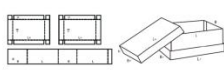
• 0301



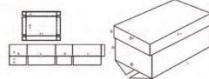
• 0306



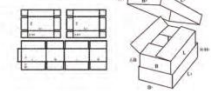
• 0310



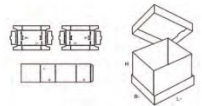
• 0312



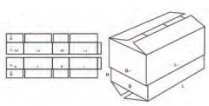
• 0313



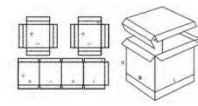
• 0314



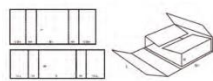
• 0320



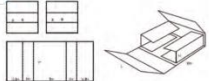
• 0325



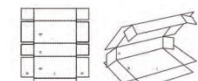
• 0404



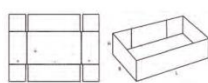
• 0405



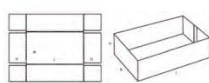
• 0410



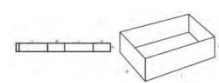
• 0452



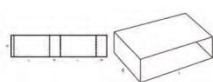
• 0453



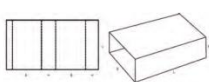
• 0501



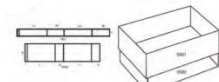
• 0502



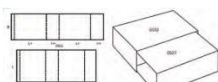
• 0503



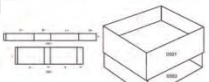
• 0504



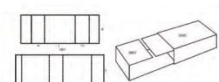
• 0505



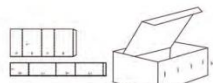
• 0507



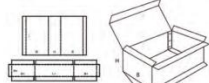
• 0509



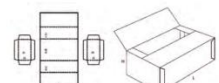
• 0510



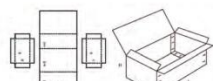
• 0512



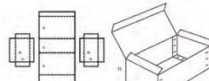
• 0605



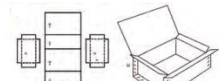
• 0607



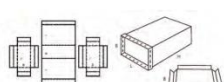
• 0608



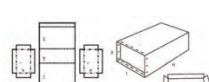
• 0610



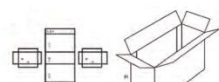
• 0615



• 0616



• 0620



Multi-Process Module (Optional)

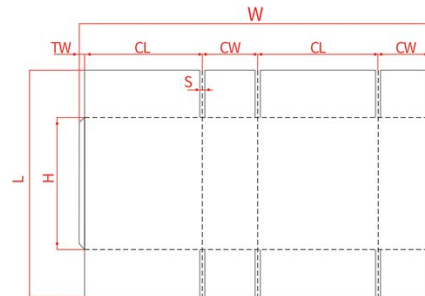
Slotter Unit

Features:

- The main drive adopts servo transmission system, equipped with professional control software, and the action is accurate and stable.
- The slotting size setting adopts an electric adjustment mechanism, which is driven by a precision ball screw, and the action is fast and accurate.
- Integrated control interface, centralized setting of various production parameters, convenient and fast conversion of product specifications.

Parameters:

- Max. Slot Depth: 420 mm
- Slotting Accuracy: ± 1.5 mm
- Slot Width (S): 7 mm
- Box Width (CW) Max: 982 mm Min: 42 mm
- Box Length (CL) Max: 1180 mm Min: 240 mm
- Board Width (W) Max: 2500 mm Min: 450 mm
- Board Length (L) Max: Subject to the constraints of the stacker. Min: 400 mm
- Machine Size: 1850 * 5600 * 1980 mm (L * W * H)
(according to the feed direction)
- Net Weight of Machine: 8000 kg



Die Cut Unit

Features:

- High-speed, high-quality die-cutting, saving manpower, resources, and time.
- Fast and precise movements, simple structure, stable performance, suitable for a wide range of board types.
- Integrated control interface for centralized setting of various production parameters, providing user-friendly and straight forward operation.

Parameters:

- Max. Board Size: 1200 mm Max. Board Size (Feed Direction)
When Using Die Cutting Function
- Max. Axial Movement of the Die-cutting Roll: ± 10 mm
- Die Cut Accuracy: ± 1.5 mm
- Machine Size: 800 * 5613 * 2027 mm
- Net Weight of Machine: 6220 kg



Box Gluer & Folding Unit

Features:

- Unique collision line structure, creating a high-speed continuous collision line system to ensure the forming effect of the cardboard.
- Temperature-adjustable upper glue system.
- Adopting a swinging nail head design, with low power consumption, faster speed, and greater stability, effectively improving the quality of nail boxes.

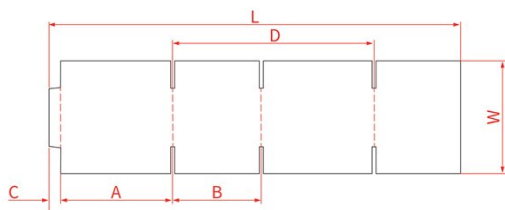
Max. Glue Speed (PCS/min): 150

Max. Single Page Size (mm) Side(A) 825
Side(B) 600

Min. Single Page Size (mm) Side(A) 175
Side(B) 145

Glue Area (Winged fold (C)): ≤ 35 mm

Folded Size (D) Max. Size 1300
Min. Size 330



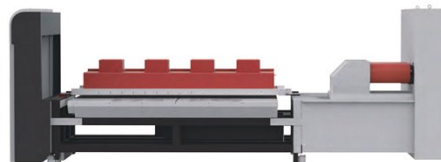
Drying Unit

Features:

- Utilizes a safe and efficient hot air drying process with stepless adjustment of hot air volume and temperature.
- Ensures stable production quality, suitable for various materials, and provides excellent drying results for coated board prints.
- Divides and conveys hot air in zones, allowing the setting of appropriate hot air areas based on product width. The hot air is recirculated, promoting energy efficiency and environmental friendliness.

Parameters:

- Machine Size: 2100 * 5600 * 1980 mm (L * W * H)
(according to the feed direction)
- Net Weight of Machine: 3200 kg



Shenzhen Hanway Industrial Digital Equipment Co., Ltd.

Add: No.39 Qingfeng Road, Baolong Street, Longgang District, Shenzhen
(2-3/F, Building C, Jingmida Digital Culture Industry Park - HanGlory Group)

Tel: +86 0755-23080896 E-mail: info@hanglorygroup.com

Fax: +86 0755-23217841 Web: www.hanglorygroup.com/en

© The above information is for reference only. Shenzhen Hanway Industrial Digital Equipment Co., Ltd. reserves the right of final interpretation. Descriptions, illustrations and specifications here of are subject to change without prior notice. Final details shall be subject to contract signed.

Specifications

Model	Glory2504		
Printing Mode			
Speed	Max. Mechanical Speed	150 m/min (Standard Version) 180 m/min (Optional Version)	
	Production Speed	75-150 m/min (Standard Version) 100-180 m/min (Optional Version)	
Equipment Information			
Media	Type	Various Corrugated Boards (Brown Boards, White Boards, etc.)	
	Infeed (L * W)	Max. Infeed: 2000 * 2500 mm (according to infeed direction)	Min. Infeed: 400 * 450 mm (according to infeed direction)
	Width	2500 mm (Max. Media Width)	
	Registration	Infeed Accuracy (Feeding Direction): ±1 mm	Printing Registration Accuracy: ±0.2 mm
	Thickness	1.5 - 15 mm	
	Handling	Leading-edge board feeding, media positioning, vacuum adsorption, conveyor belt, ensure stability and high quality during the printing process of corrugated cardboard.	
Printing	Technology	Single Pass, Piezoelectric Inkjet Technology	
	Printheads	Up to 20 heads per color	
	Colors	1~4 colors (C, Y, M, K)	
	Width	2160 mm (Max. Print Width)	
	Ink	Water-Based	
	Ink Supply	Negative Pressure Fully Automatic Ink Supply System	
Software & Input Formats	Third-Party Professional RIP Software, PDF, EPS, TIFF, JPEG, AI, etc. (Provides color solutions for different printing materials)		
Operating Software	Glory 2504 Inkjet Control Software		
Other Functions	Warping Automatic Detection System, Ink Cost Estimation Function, Remote Diagnosis and Maintenance, Production Management System		
Electrical & Environmental			
Air Supply Requirements	Pressure: 0.6 - 0.84 MPa, Flow Rate ≥200 L/min, Clean Air (Oil-Free, Water-Free)		
Environmental Requirements	22 - 28°C (Temp), 45 - 65% RH (Non-Condensing) (Humidity)		
Power Supply & Installation Power	Three Phase AC 380V~400V, 3P+PE, 140A, 50/60 Hz, 69 kW		
	Optional Slotter Unit: 160A, 77 kW	Optional Drying Unit: 176A, 110 kW	Optional Die Cut Unit: 76A, 38 kW
Dimensions & Weight			
Equipment Dimensions (L * W * H)(Feeding direction)	Digital Unit : 6800 * 5750 * 2570 mm		Min. Site Requirements: 14100 * 13000 * 4000 mm
	Optional Slotter Unit: 1850 * 5600 * 1980 mm	Optional Drying Unit: 2100 * 5600 * 1980 mm	Optional Die Cut Unit: 800 * 5613 * 2027 mm
Net Weight	Equipment : 15200 kg		
	Optional Slotter Unit: 8000kg	Optional Drying Unit: 3200kg	Optional Die Cut Unit: 6220kg

Industrial Digital Printing Solution Provider

